



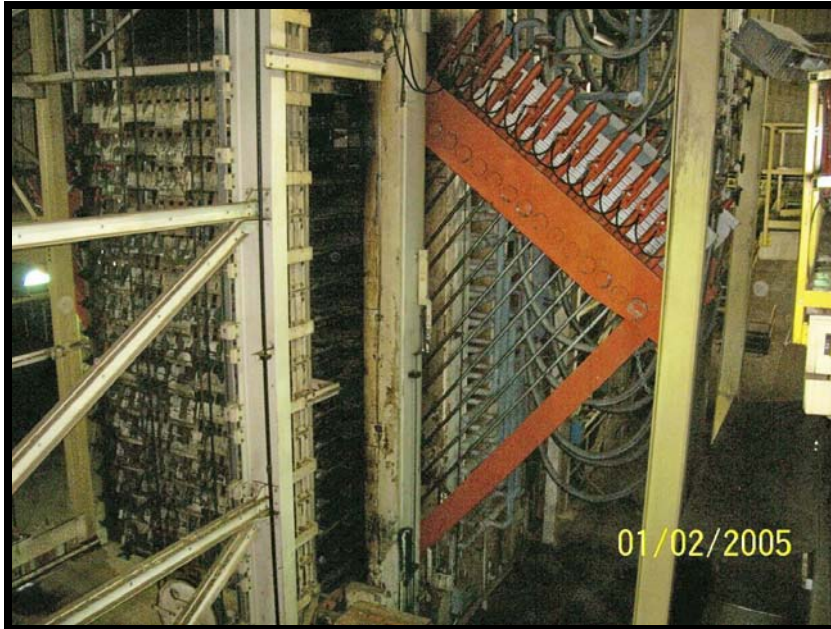
Press Dieffenbacher

This information is provided in good faith to describe assets available for sale “as is, where is, without warranty”. The information is believed to be accurate, however, verification of the details and determination of suitability for use are the responsibility of the buyer. Availability is subject to prior sale.

Description: The press is a 16-opening press retrofitted with Dieffenbacher perforated platens originally manufactured by KMW of Sweden. The master panel size is 8 ft x 16 ft (2565 mm x 4953 mm) and accommodates board thickness of 1/4 inch to 1-1/8 inch (6,35 mm to 28,575 mm). The press is an oil hydraulic press with a low-pressure accumulator for fast closing. Closing speed with the accumulator is at the speed of 720 inches (1828,8 cm) per minute. The hydraulic system pressure is 4,500 psi (31,02 MPa). Pressure applied to the full-size master panels is 825 psi (5,69 MPa) when system pressure is 4,500 psi (31,02 MPa). There are six 200-HP motors driving six high-pressure, low-volume pumps; six intermediate-pressure, intermediate-volume pumps; and six low-pressure, high-volume pumps. The press is fitted with simultaneous closing arms that close each daylight at the same rate and time, resulting in uniform pressing of each of the 16 master panels. The positioning of the simultaneous closing arms is by individual hydraulic cylinders. There are eight pressing cylinders, four cylinders on each side. These cylinders are grouped into four pairs that control the four corners of the press for precise positioning of the bottom press table in relation to the upper press bolster. Linear variable differential transducers are utilized to control the positioning of the bottom table. Proper bottom table positioning results in excellent after-press thickness of each master panel. Press heating is accomplished with heated thermal oil pumped through channels in each platen.



Contact: Chris Mimes, Asset Recovery Manager, Roy O. Martin Lumber Company for pricing and specifications. Office (318)483-3822, Cell (318)446-1132 or email: chris.mimes@royomartin.com.



Contact: Chris Mimes, Asset Recovery Manager, Roy O. Martin Lumber Company for pricing and specifications. Office (318)483-3822, Cell (318)446-1132 or email: chris.mimes@royomartin.com.