

Eclipse™ Energy Guard

Product Information & Installation Manual 01

Important Notice to Buyers and Users of RoyOMartin Eclipse™ Energy Guard wall system

These instructions are not intended to cover every installation requirement, application, detail or variation, nor do they provide for every possible installation contingency. If any questions or problems arise concerning the installation of this product or its suitability for the purchaser's particular use, inquiries should be made to RoyOMartin at royomartin.com. The information about products and application instructions printed herein is current at the time of publication; however, in accordance with RoyOMartin's policy of constant product improvement, the right is reserved to vary these application instructions and product specifications without notice. Ask for the most current product information when placing product orders.

Product Description

Eclipse™ Energy Guard is an innovative wall sheathing system that integrates the proven energy efficiency of Eclipse™ Radiant Barrier Panels with the benefits of diffusing vapor and air into a product that eliminates the need for a separate house wrap. Using approved Energy Guard tape to seal seams and corners, Eclipse™ Energy Guard is an effective solution to ensure a superior thermo/vapor sidewall building system unmatched by conventional house wrap.

Eclipse™ Energy Guard Wall System Includes:

- Eclipse™ Radiant Barrier Panels
- Approved Energy Guard tape
- IBC-approved adhesive flashing

Application

Eclipse™ Energy Guard wall system is designed for applications that require a structural panel and/or house wrap. Product may be used in stucco applications; however, stucco cannot be applied directly to Eclipse™ Radiant Barrier Panels. Follow approved two layer membrane application to Eclipse™ Radiant Barrier Panels prior to stucco application.

Product Warranty

See RoyOMartin's 25-year limited warranty for details.

Storage & Handling

All oriented strand board (OSB) materials should be stored to avoid excessive moisture pick-up and must be covered and kept free from construction dust and moisture during storage and installation. Exposure to rain, snow or similar elements compromises product performance and may void the warranty.

Certification

Eclipse™ Radiant Barrier Panels are certified by APA–The Engineered Wood Association and are manufactured in conformance with APA PRP-108 and U.S. Voluntary Product Standard PS2. Eclipse™ Radiant Barrier Panels are available FSC certified. Additionally, Eclipse™ Radiant Barrier Panel/Energy Guard system meets the following testing standards:

- ASTM Test Method E 96-05 (*Water Vapor Transmission*): < 1 perm
- ASTM Test Method E 2178-03 (*Air Permeance*): < .02
- ASTM Test Method C 1371 (*Surface Emittance*): < .10

Fire Rating

A class "B" fire rating advances the performance capabilities of Eclipse™ Radiant Barrier Panels.

- ASTM Test Method E84 (*Flame Spread*): Class "B"
- ASTM Test Method E 84 (*Smoke Development*): Class "B"

Available Sizes:

Eclipse™ applied to Oriented Strand Board (OSB)

Lengths:	Thicknesses:
96 in.	3/8 in., 7/16 in., 15/32 in., 19/32 in., 23/32 in.
97 1/8 in.	7/16 in.
108 in.	3/8 in., 7/16 in.
109 1/8 in.	7/16 in.

Made in the USA

All RoyOMartin products are manufactured in the USA.

Eclipse™ Energy Guard

Product Information & Installation Manual 02

2.0 General Installation Requirements

- 2.1 Install Eclipse™ Radiant Barrier Panels with Eclipse™ foil side facing outward, adhering to local building codes.
- Vertical application recommended.
 - See Tuffstrand® installation guide for span rating and fastener details.
 - Circular saw cuts must be made with foil side facing down to avoid foil damage.
 - Blocking should be used at all joints.
 - Torn spots to Eclipse™ Radiant Barrier Panels or damage to Energy Guard tape should be repaired.
 - Use expandable foam to repair any small wall protrusions or breaches in the radiant barrier after the finished exterior siding is installed.

(See Figure 2.1)

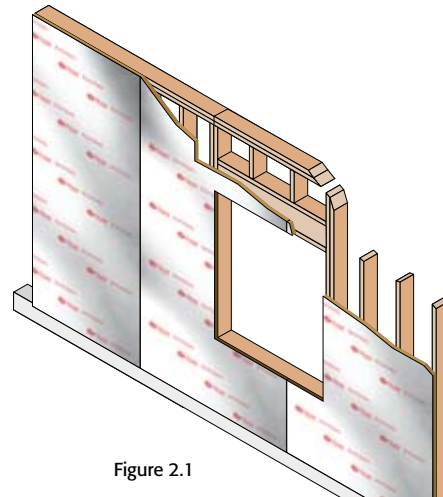


Figure 2.1

- 2.2 Attach Eclipse™ Radiant Barrier Panels to stud wall with 1/8 inch space between panel edges in accordance with industry standards for wood sheathing installation.

(See Figure 2.2)

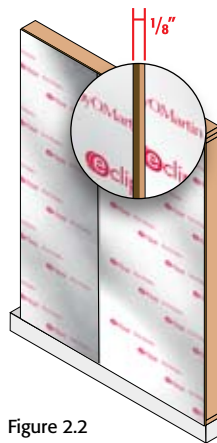


Figure 2.2

- 2.3 Tape all seams and corners with approved Energy Guard tape.

(See Figure 2.3)

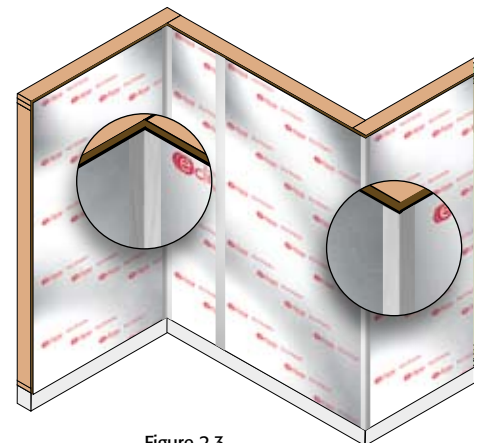


Figure 2.3

- 2.4 All openings—including windows, doors, wall vents and penetration openings—must be installed using IBC-approved adhesive flashing.

(Window Installation detail—See Page 3.0)

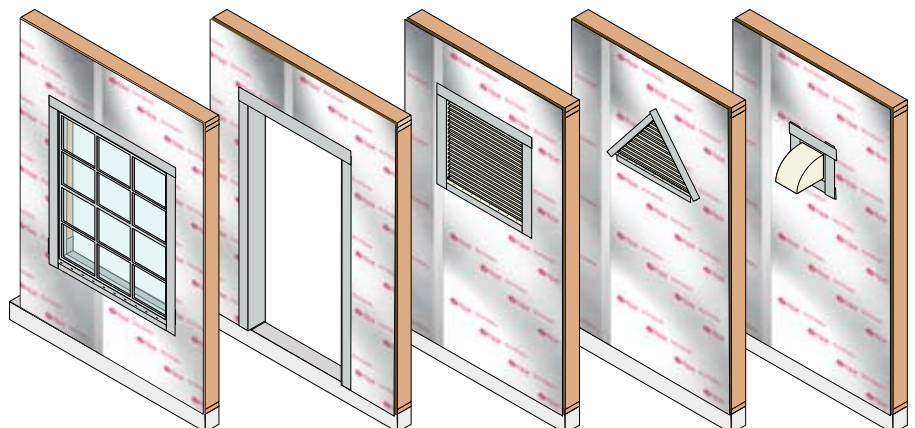
(Door Installation detail—See Page 4.0)

(Rectangular Vent Installation detail—See Page 5.0)

(Triangular Vent Installation detail—See Page 6.0)

(Wall-Roof Interface Installation detail—See Page 7.0)

(Wall Penetration Installation detail—See Page 8.0)



Eclipse™ Energy Guard

Product Information & Installation Manual 03

3.0 Typical Window Installation

3.1 Fasten Eclipse™ Radiant Barrier Panels to wood frame and apply approved Energy Guard tape as detailed in section 2.0.

(See Figure 3.1)

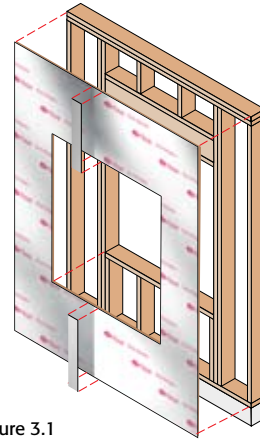


Figure 3.1

3.2 Measure and cut IBC-approved adhesive flashing length at least 12 inches longer than horizontal length of sill plate.

(See Figure 3.2A)

Flashing width should be sufficient to cover sill plate plus a minimum of 2 inches on exterior Eclipse™ Radiant Barrier Panel.

(See Figure 3.2B)

Notch, fold and apply flashing to cover sill plate, ensuring a 6 inch long strip of flashing to both vertical sides.

(See Figure 3.2C)

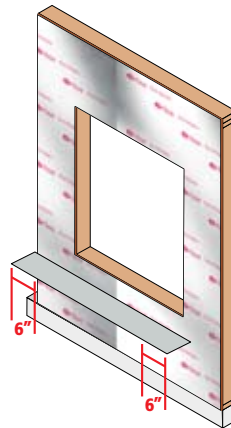


Figure 3.2A

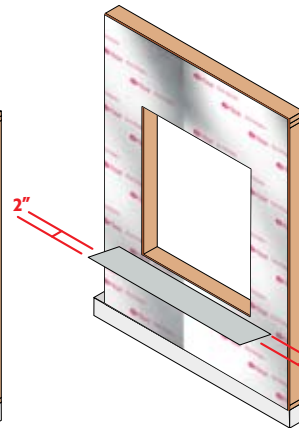


Figure 3.2B

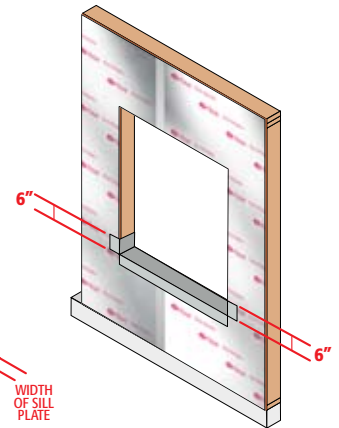


Figure 3.2C

3.3 Install window according to manufacturer's instructions, adhering to all local building codes.

(See Figure 3.3A)

Measure and cut IBC-approved adhesive flashing length at least 2 inches longer than vertical length of window. Apply flashing overlapping window frame at least 1 inch.

(See Figure 3.3A)

Repeat process for top of window, overlapping previously applied flashing at least 2 inches.

(See Figure 3.3C)

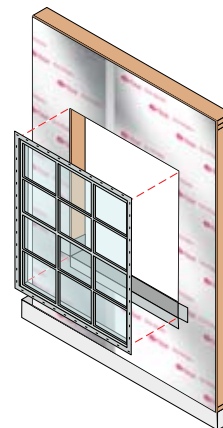


Figure 3.3A

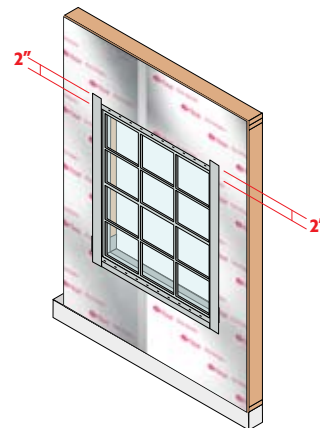


Figure 3.3B



Figure 3.3C

Eclipse™ Energy Guard

Product Information & Installation Manual 04

4.0 Typical Door Installation

4.1 Fasten Eclipse™ Radiant Barrier Panels to wood frame and apply approved Energy Guard tape as detailed in section 2.0.

(See Figure 4.1)

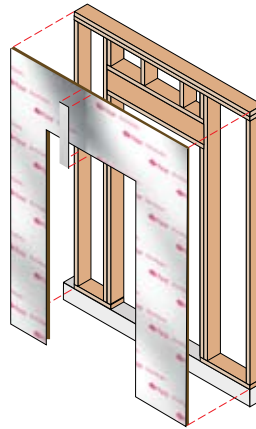


Figure 4.1

4.2 Measure and cut IBC-approved adhesive flashing length at least 2 inches longer than vertical length of door jamb.

(See Figure 4.2A)

Flashing width should be sufficient to cover door jamb plus 2 inches on exterior Eclipse™ Radiant Barrier Panel.

(See Figure 4.2B)

Notch, fold and apply flashing to cover door jamb. Install on vertical sides of door jamb.

(See Figure 4.2C)

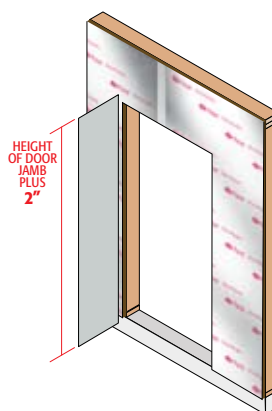


Figure 4.2A

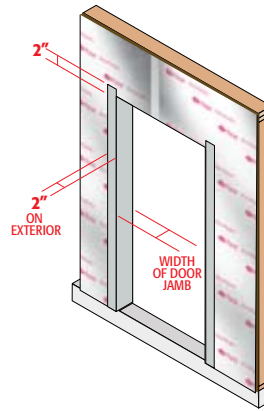


Figure 4.2B

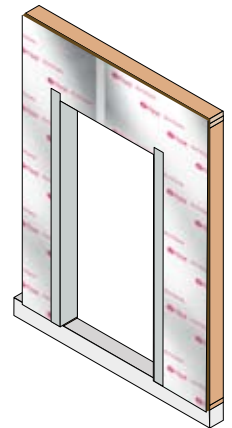


Figure 4.2C

4.3 Measure and cut IBC-approved adhesive flashing length at least 2 inches longer than horizontal length of the head door jamb.

(See Figure 4.3A)

Measure and cut flashing width sufficient to cover head door jamb plus 2 inches on exterior Eclipse™ Radiant Barrier Panel.

(See Figure 4.3B)

Notch, fold and apply flashing to cover head door jamb.

(See Figure 4.3C)

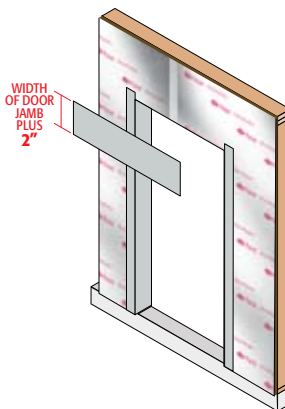


Figure 4.3A

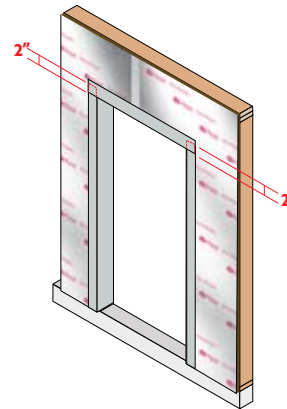


Figure 4.3B

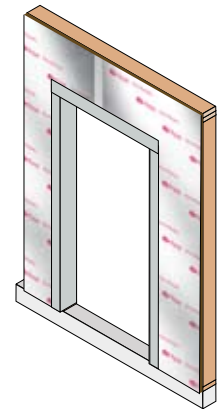


Figure 4.3C

Eclipse™ Energy Guard

Product Information & Installation Manual 05

5.0 Typical Rectangular Vent Installation

5.1 Fasten Eclipse™ Radiant Barrier Panels to wood frame and apply approved Energy Guard tape as detailed in section 2.0.

(See Figure 5.1)

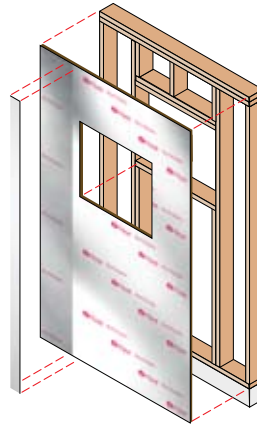


Figure 5.1

5.2 Measure and cut IBC-approved adhesive flashing length at least 12 inches longer than horizontal length of vent jamb.

(See Figure 5.2A)

Flashing width should be sufficient to cover vent jamb plus a minimum of 2 inches on exterior Eclipse™ Radiant Barrier Panel.

(See Figure 5.2B)

Notch, fold and apply flashing to cover entire vent jamb, ensuring a 6 inch long strip of flashing to both vertical sides.

(See Figure 5.2C)

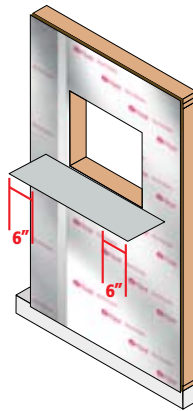


Figure 5.2A

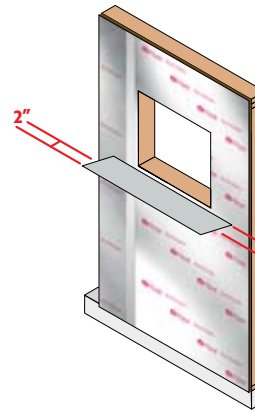


Figure 5.2B

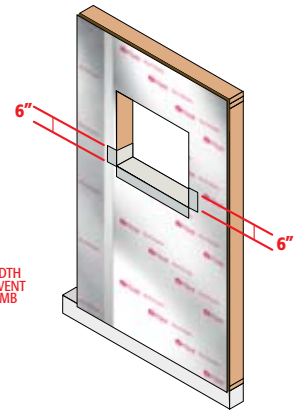


Figure 5.2C

5.3 Install vent according to manufacturer's instructions, adhering to all local building codes.

(See Figure 5.3A)

Measure and cut IBC-approved adhesive flashing length at least 2 inches longer than vertical length of vent. Apply flashing overlapping vent frame at least 1 inch.

(See Figure 5.3B)

Repeat process for top of vent, overlapping previously applied flashing at least 2 inches.

(See Figure 5.3C)

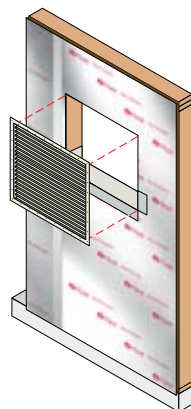


Figure 5.3A

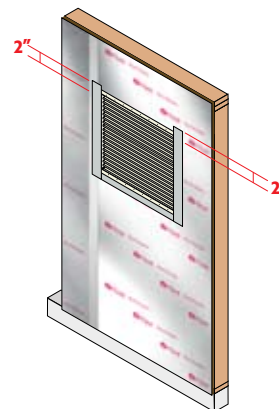


Figure 5.3B

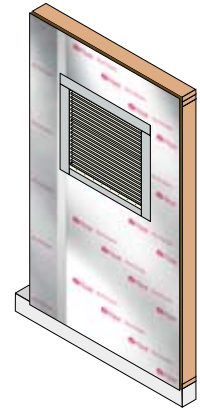


Figure 5.3C

Eclipse™ Energy Guard

Product Information & Installation Manual 06

6.0 Typical Triangular Vent Installation

6.1 Fasten Eclipse™ Radiant Barrier Panels to wood frame and apply approved Energy Guard tape as detailed in section 2.0.

(See Figure 6.1)

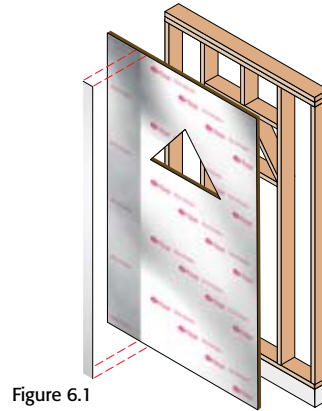


Figure 6.1

6.2 Measure and cut IBC-approved adhesive flashing length at least 12 inches longer than horizontal length of vent jamb.

(See Figure 6.2A)

Flashing width should be sufficient to cover vent jamb plus a minimum of 2 inches on exterior Eclipse™ Radiant Barrier Panel.

(See Figure 6.2B)

Notch, fold and apply flashing to cover vent jamb, ensuring a 6 inch long strip of flashing to both triangular sides.

(See Figure 6.2C)

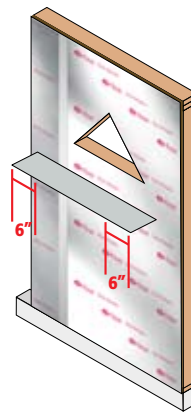


Figure 6.2A

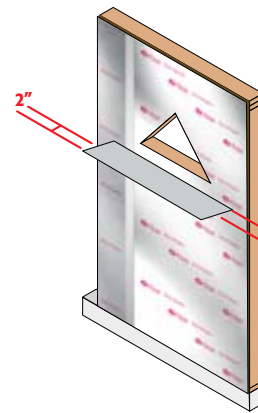


Figure 6.2B

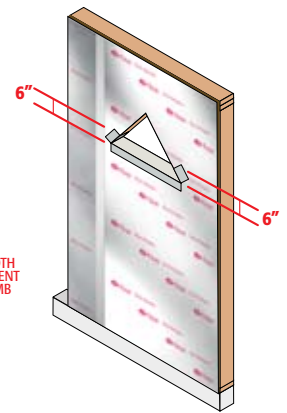


Figure 6.2C

6.3 Install vent according to manufacturer's instructions, adhering to all local building codes.

(See Figure 6.3A)

Measure and cut IBC-approved adhesive flashing length at least 2 inches longer than triangular length of vent. Apply flashing overlapping vent frame at least 1 inch and overlapping flashing at top of triangular frame.

(See Figure 6.3B)

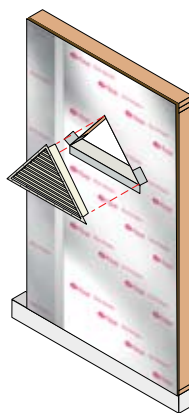


Figure 6.3A

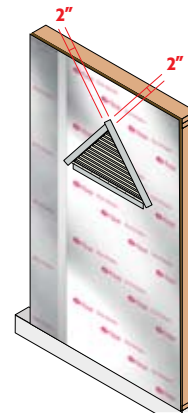


Figure 6.3B

Eclipse™ Energy Guard

Product Information & Installation Manual 07

7.0 Typical Sidewall-Roof Installation

- 7.1 Fasten Eclipse™ Radiant Barrier Panels to wood frame and apply approved Energy Guard tape as detailed in section 2.0.

(See Figure 7.1)

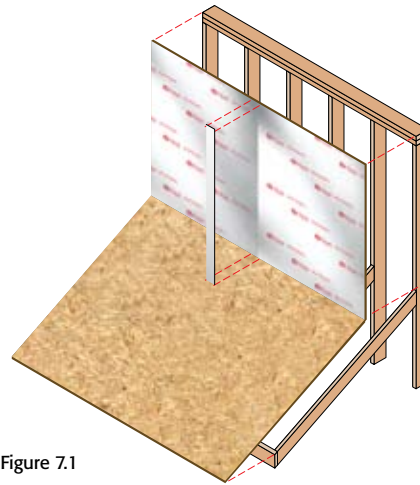


Figure 7.1

- 7.2 Install roofing underlayment according to manufacturer's instructions adhering to all local building codes.

(See Figure 7.2A)

Measure and cut IBC-approved adhesive flashing width at least 12 inches. Install 6 inches of flashing to Eclipse™ Radiant Barrier Panels on wall and 6 inches of flashing to roofing underlayment.

(See Figure 7.2B)

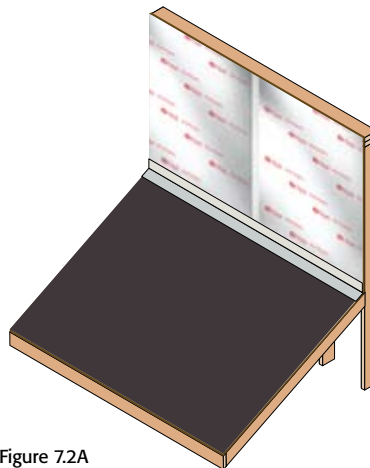


Figure 7.2A

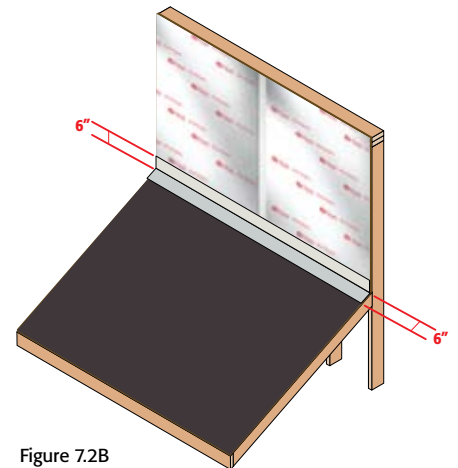


Figure 7.2B

- 7.3 Apply roofing system and metal roofing flashing according to manufacturer's instructions, adhering to all local building codes.

(See Figure 7.3A)

Install exterior wall system according to manufacturer's instructions, adhering to all local building codes.

(See Figure 7.3B)

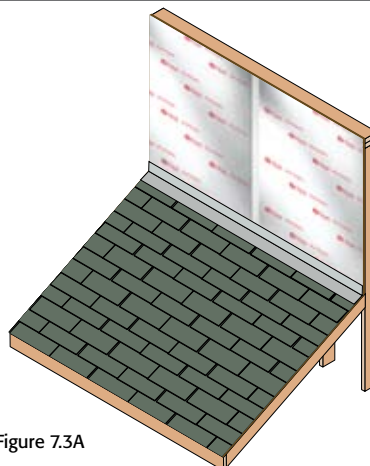


Figure 7.3A

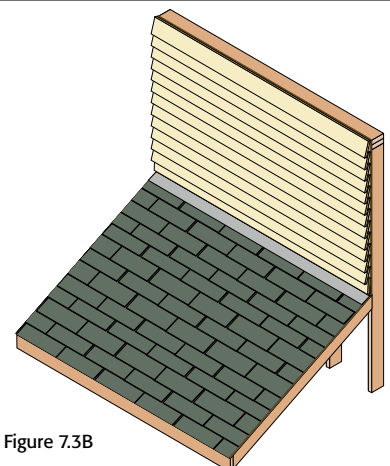


Figure 7.3B

Eclipse™ Energy Guard

Product Information & Installation Manual 08

8.0 Typical Wall Penetration Installation

8.1 Fasten Eclipse™ Radiant Barrier Panels to wood frame and apply approved Energy Guard tape as detailed in section 2.0.

(See Figure 8.1A)

Cut opening out of Eclipse™ Radiant Barrier Panel wall to accommodate penetration fixture—[exhaust vent, electrical box, or other fixture].

(See Figure 8.1B)

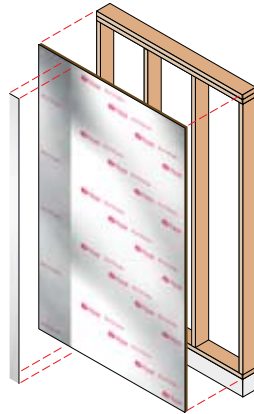


Figure 8.1A

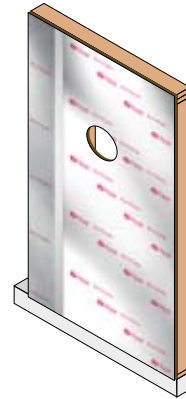


Figure 8.1B

8.2 Install fixture according to manufacturer's instructions, adhering to all local building codes.

(See Figure 8.2A)

Measure and cut IBC-approved adhesive flashing horizontal length at least 4 inches longer than bottom of fixture frame. Apply flashing overlapping fixture frame at least 1 inch.

(See Figure 8.2B)

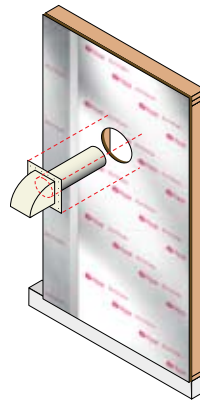


Figure 8.2A

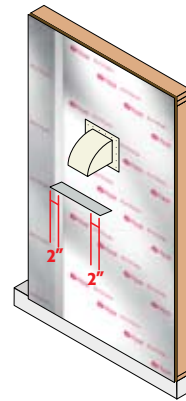


Figure 8.2B

8.3 Measure and cut IBC-approved adhesive flashing vertical length at least 4 inches longer than vertical fixture frame. Apply flashing to both vertical sides overlapping fixture frame at least 1 inch.

(See Figure 8.3A)

Measure and cut IBC-approved adhesive flashing horizontal length at least 4 inches longer than top of fixture frame. Apply flashing overlapping fixture frame at least 1 inch.

(See Figure 8.3B)

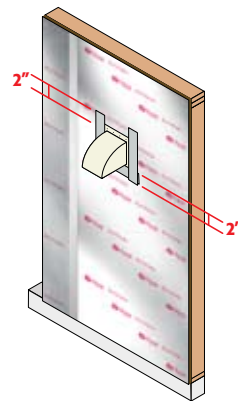


Figure 8.3A

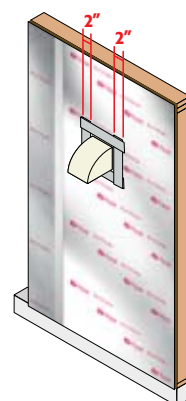


Figure 8.3B