



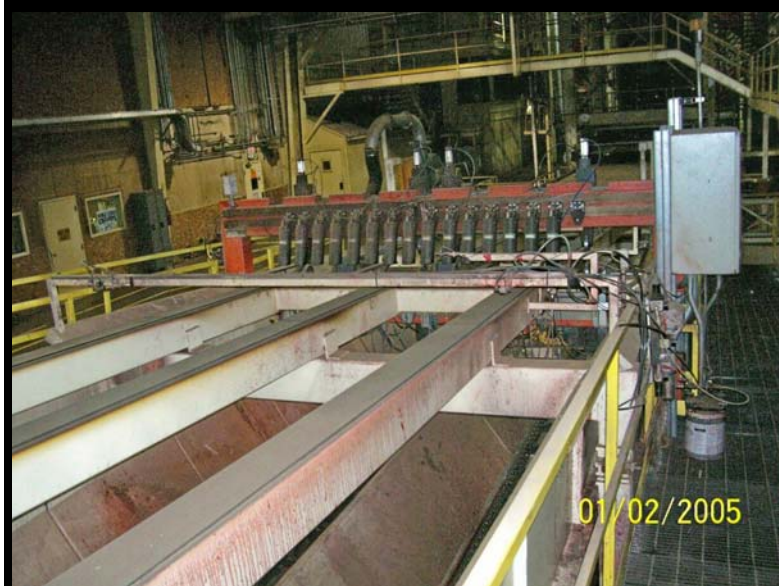
## SAWLINE

*This information is provided in good faith to describe assets available for sale “as is, where is, without warranty”. The information is believed to be accurate, however, verification of the details and determination of suitability for use are the responsibility of the buyer. Availability is subject to prior sale.*

**Description:** The sawline consists of two-pass and stacking bins manufactured by TSI (Edmonds, Washington, USA) producing four 4' X 8' panels from each master panel. There are two “A” grade bins and two reject bins in the sawing system.



**Contact:** Chris Mimes, Asset Recovery Manager, Roy O. Martin Lumber Company for pricing and specifications. Office (318)483-3822, Cell (318)446-1132 or email: [chris.mimes@royomartin.com](mailto:chris.mimes@royomartin.com).



**Contact:** Chris Mimes, Asset Recovery Manager, Roy O. Martin Lumber Company for pricing and specifications. Office (318)483-3822, Cell (318)446-1132 or email: [chris.mimes@royomartin.com](mailto:chris.mimes@royomartin.com).